

PORT MANATEE ENCOURAGEMENT ZONE PDEZ-08-22 (Z)(G)(R2)

PDEZ-08-22 (Z)(G)(R2) AREA D

Height, Bulk, Dimensional, & Landscape Requirements:

Area D- Min. Setbacks- 25'-F, 20'-S, 20'-R
Proposed Sq. Footage: D-1 - 1,119,594 sq ft
 D-2, D-3 - N/A

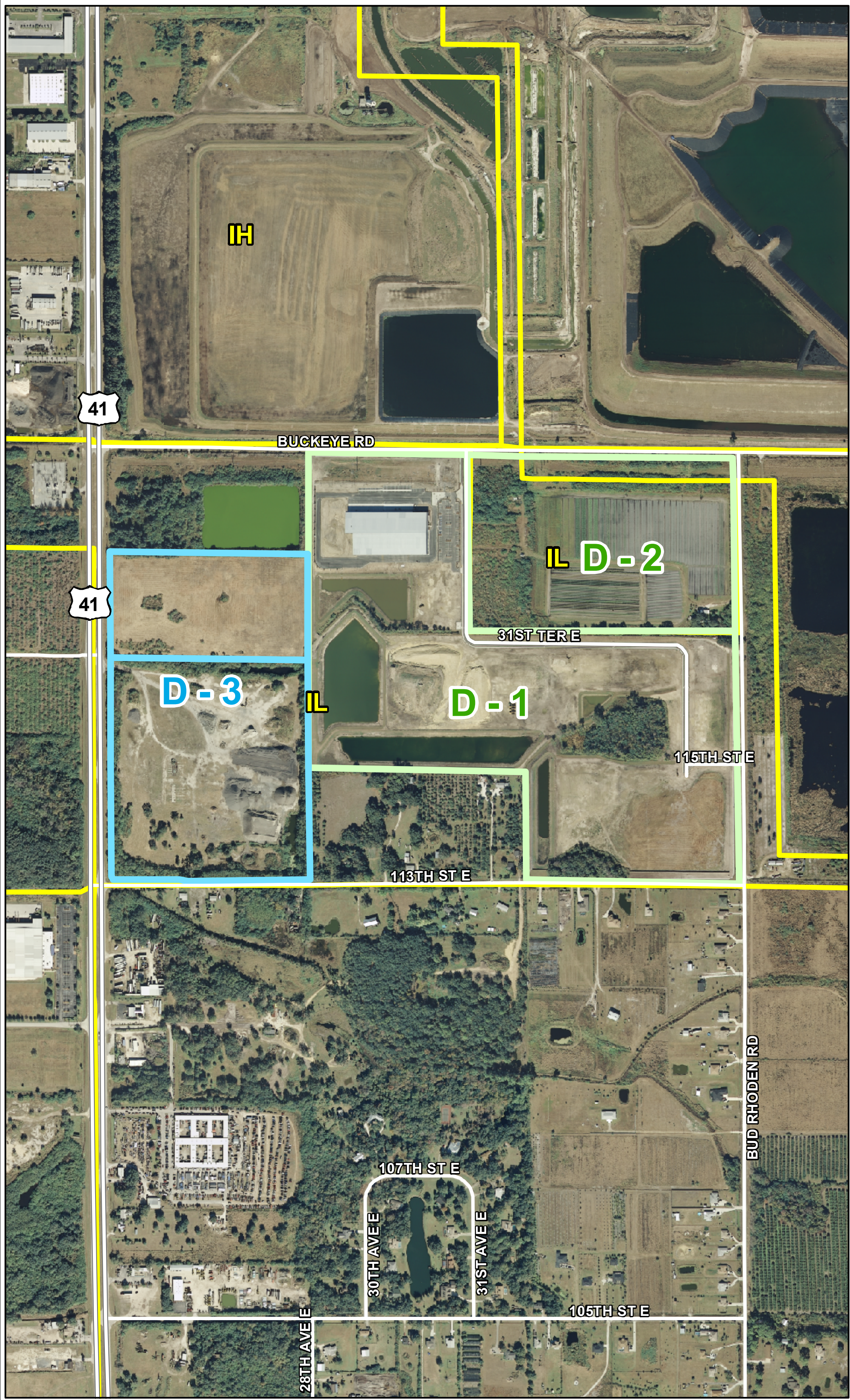
FAR- D-1 - .50 max
 D-2 & D-3 - .75 max

Max HT: D-1 - Lots 1-3 - 50 ft.
 4-22 - 45 ft
 23-29 - 35 ft
 D-2 & D-3 - 50 ft.

D - 1 USES

D - 2 & D - 3 USES

- | | |
|--|---|
| <ul style="list-style-type: none"> Farm Equipment & Supply Establishments Business Services Professional Office Medical & Dental Laboratory Industrial Service Establishment Office Car Wash, Full Service Construction Service Estab. Dry Cleaners, General Food Catering Wholesale Trade Establishment Personal Service Establishment Rental Service Establishment Sign Painting Service Light Manufacturing Research & Development Activity Research/Corporate Uses Post Office Public Community Use Public Use Facilities Utility Use Day Care, Accessory Warehouse Mini-Warehouse | <ul style="list-style-type: none"> Agricultural Research Facilities Short Term Agricultural Uses Agricultural Products Processing Plants Agriculture Farming Service Establishments Industrial Service Establishment Motor Vehicle Repair, Major Office Drive-Thru Eating Establishment Farm Equipment and Supply Estab. Service Station Eating Establishment Bank Drive Thru Dry Cleaners, Pick-Up Exterminating and Pest Control Hotels Printing, Medium Printing, Heavy Wholesale Trade Establishment Light Manufacturing Research and Development Activity Antenna Camouflaged Tower (150' Max.) Guyed Tower Lattice Tower (400' Max) Monopole Towers Post Offices |
|--|---|
-
- | | |
|--|--|
| <ul style="list-style-type: none"> Construction services establishment Building materials establishment Motor vehicle sales, rental & leasing School of special education Neighborhood retail Bank Business services Professional office | <ul style="list-style-type: none"> Public Community Use Public Use Facility Radio, TV, Communications, & Microwave Facilities Utility Use Outdoor Advertising Signs Lumberyard Outdoor Storage Towing Service Establishment Minor Earthmoving Major Earthmoving Passive Recreational Uses Day Care Facilities (Accessory) Bus RR Passenger Station Helistop Intermodal Terminal Motor Freight Terminal Motor Pool Facilities Warehouse Mini-warehouse Gas Pumps |
|--|--|
-
- | |
|--|
| <ul style="list-style-type: none"> Construction services establishment Building materials establishment Motor vehicle sales, rental & leasing School of special education Neighborhood retail Bank Business services Professional office |
|--|



NEW EZ PARCELS	EXISTING EZ PARCELS	NEW EZ PARCELS
603200159	603200459	603200759
603200209	603200509	603200809
603200259	603200559	603200859
603200309	603200609	603200909
603200359	603200659	603200959
603200409	603200709	603201009
		600810009
		600900005

This map was developed by the Manatee County Geographic Information Systems Division. It is provided for general reference and is not warranted in any way. Errors from non-coincidence of features from different sources may exist. The Manatee County BOCC shall be held harmless for inappropriate or unintended uses of the information.

Map Author: paulh
 Creation Date: 3/2011
 Map Document Name: C:\PLANNING\John O\PDEZ Expansion

D-1 - 98 ACRES
D-2 - 35 ACRES
D-3 - 57 ACRES
TOTAL - 190 ACRES